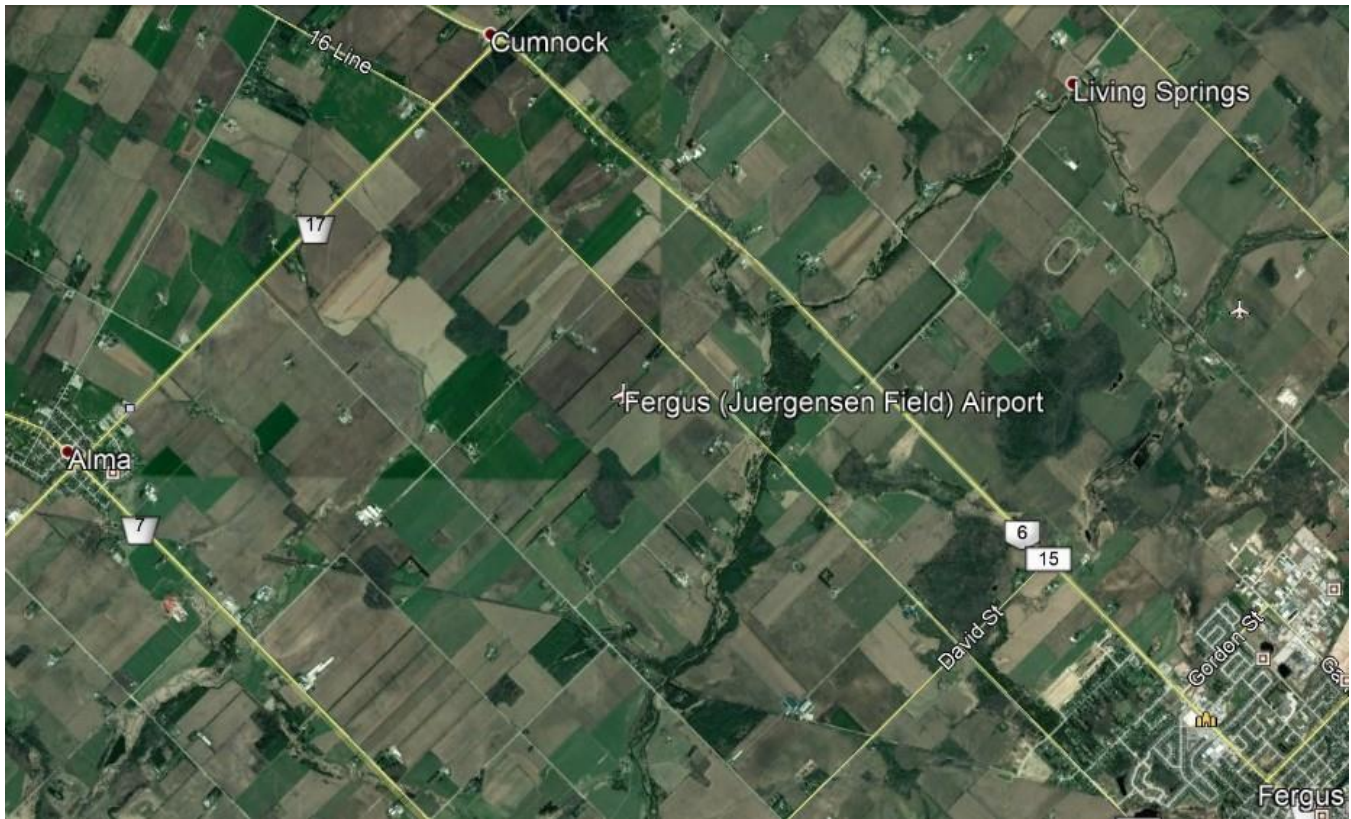




KWRAA – Juergensen Field Fly-in (CPG7)

August 6, 2022 (10:00 to 14:00 hrs.) Rain Date: Aug. 7



Fly-in Details:

Juergensen Field is located at: N43°44.10' / W80°26.83'

Airstrip Details:

- 2300 x 75 feet Grass Strip
- 1450' ASL
- Oriented Northeast-Southwest (05-23)
- Clear Approaches
- Cessna 172 capable
- Use 123.4 when approaching the field
- 2.8 miles east of the village of Alma
- 3 miles from Salem and the outskirts of Fergus
- Follow standard uncontrolled aerodrome procedures

Drive-in Details:

From KW, take Northfield Drive (becomes Wellington 18) through Salem to Beatty Line North. Turn left and go to # 6854.

From Guelph take #6 North through Fergus to Road 15. Turn left and go one mile to Beatty Line North then right.

Contact Information:

Mac McCulloch (Director of Fly-ins and Special Events)

Phone: (519) 831-0967

MacPat@live.ca

C. Juergensen (Fly-in Host):

6854 Beatty Line North

Phone: (519) 843-1487

Note: The chapter will be supplying the burgers, buns, condiments and soft drinks. Event runs from 10am to 2pm.

Please bring a salad or dessert to round out the pot-luck lunch at noon. It's always a great lunch and the cost is still \$5, but additional donations are accepted to assist with our good neighbour program.

Bring your spouse or feel free to invite a flying friend... the more pilots (and co-pilots) there the better!

* Covid-19 Restrictions:

Attendees should be vaccinated and prepared to show proof on arrival. Attendees may be required to provide contact information, sign a liability waiver, and bring a mask to wear whenever closer than 6 feet to other attendees. Provincial restrictions have eased, but please be respectful of other people's space and their rights to a Covid-19 safe event.