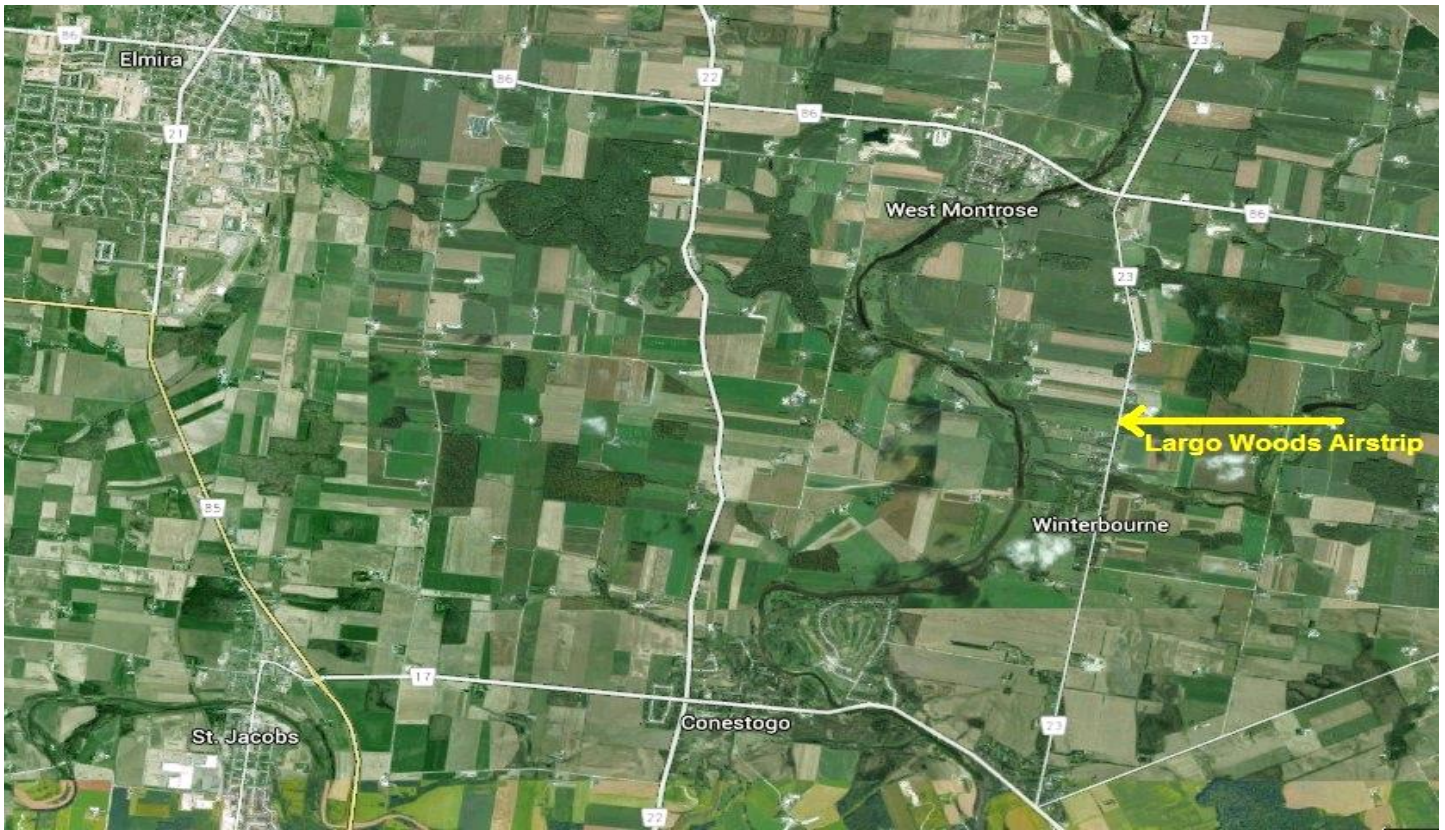




# KWRAA – Largo Woods Fly-in (CLW6)

**June 4, 2022** (10:00 to 14:00 hrs.) **Rain Date:** June 5 (12:30 to 16:00)\*



## Fly-in Details:

Largo Woods is located at [N 43 33.993, W 080 28.207](#).

### Airstrip Details :

- In the CFS under Conestogo – Largo Woods
- 2000' x 35' Grass strip (maintained in summer)
- 1100 ft. ASL (Confirm altimeter setting - 125.1 Mhz)
- Oriented east-west
- Powerlines on the east end (marked with safety balls)
- River off the west end and sloped runway for 300 ft.
- Potential downdrafts near the river and trees
- High tension lines within a mile to the east and south
- Use **123.2 Mhz** when approaching the field
- Follow standard uncontrolled aerodrome procedures

## Drive-in Details:

Largo Woods field is just off Katherine Street on Largo Woods Lane, on the north side of the village of Winterbourne. Cam's place is at the end of the lane on the right. Bring a couple of lawn chairs if you can.

## Contact Information:

Mac McCulloch (Director of Fly-ins and Special Events)  
Phone: (519) 831-0967  
MacPat@live.ca

Cam Wood (Fly-in Host):  
128 Katherine St N. West Montrose N0B 2V0  
Phone: (519) 590-2269  
cam.wood@c3group.com

**Note:** The chapter supplies burgers, buns, condiments and soft drinks. Event runs from 10am to 2pm. (\*except Sunday)  
**Please bring a salad or dessert to round out the pot-luck lunch at noon.** It's always a great lunch and the cost is still \$5, but additional donations are accepted to assist with our good neighbour program.  
**Bring your spouse or feel free to invite a flying friend... the more pilots (and co-pilots) there the better!**

## \* Covid-19 Restrictions:

**Attendees should be vaccinated and prepared to show proof on arrival. Attendees may be required to provide contact information, sign a liability waiver, and bring a mask to wear whenever closer than 6 feet to other attendees. Provincial restrictions have eased, but please be respectful of other people's space and their rights to a Covid-19 safe event.**