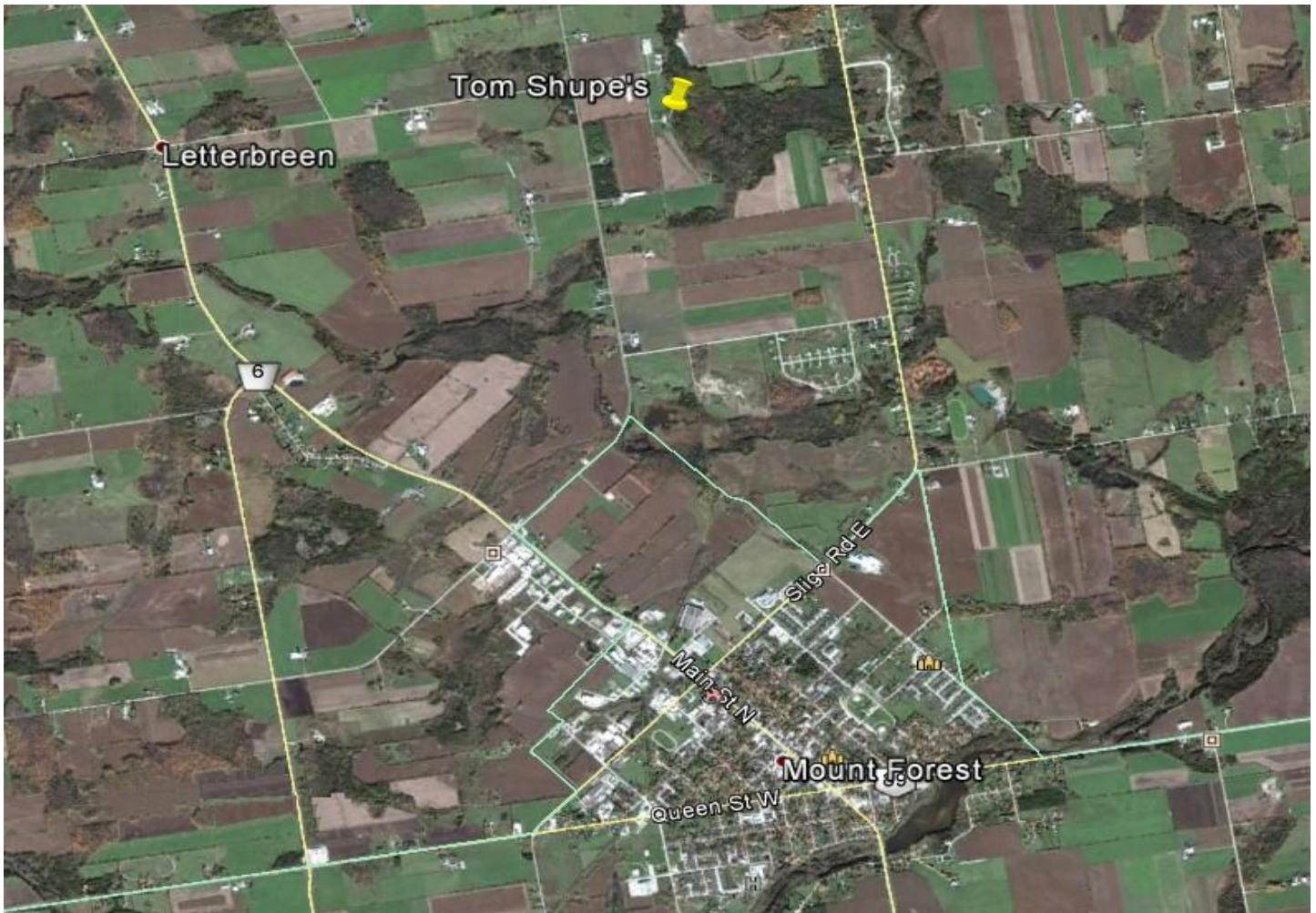




KWRAA – Tom Shupe's 2018 Fly-in

83294 Southgate Road, Mount Forest ON N0G 2L0



Fly-in Details:

Tom's Airstrip is located at: 44° 1'11.00"N 80°44'41.00"W

Airstrip Details:

- 1600' x 66' Grass strip
- 1335' ASL
- Oriented North-South (14-32)
- Runway is slightly uphill from south to north
- Clear approaches both directions
- Cessna 172 capable
- Use 123.2 when approaching the field
- 2.8 miles directly north of the centre of Mount Forest
- Follow standard uncontrolled aerodrome procedures

Drive-in Details:

Take Highway 6 North through Mount Forest. Go 2.2 km north from the main intersection at Hwy 89, then turn right onto Grey County Rd 109. Drive 3.3 km then turn right onto Southgate Road. Tom's place is 0.6 km on the right (#083294)

Contact Information:

Mac McCulloch (Director of Fly-ins and Special Events)
Phone: (519) 831-0967
MacPat@live.ca

Tom Shupe (Fly-in Host):
83294 Southgate Road, Mount Forest ON N0G 2L0
Phone: (519) 323-4067

Note: The chapter will be supplying the burgers, buns, condiments and soft drinks. Event runs from 10am to 2pm. Please bring a salad or desert to round out the pot-luck lunch at noon. It's always a great lunch and the cost is still \$5, but additional donations are accepted to assist with our good neighbour program.

Bring your spouse or feel free to invite a flying friend... the more pilots (and co-pilots) there the better!