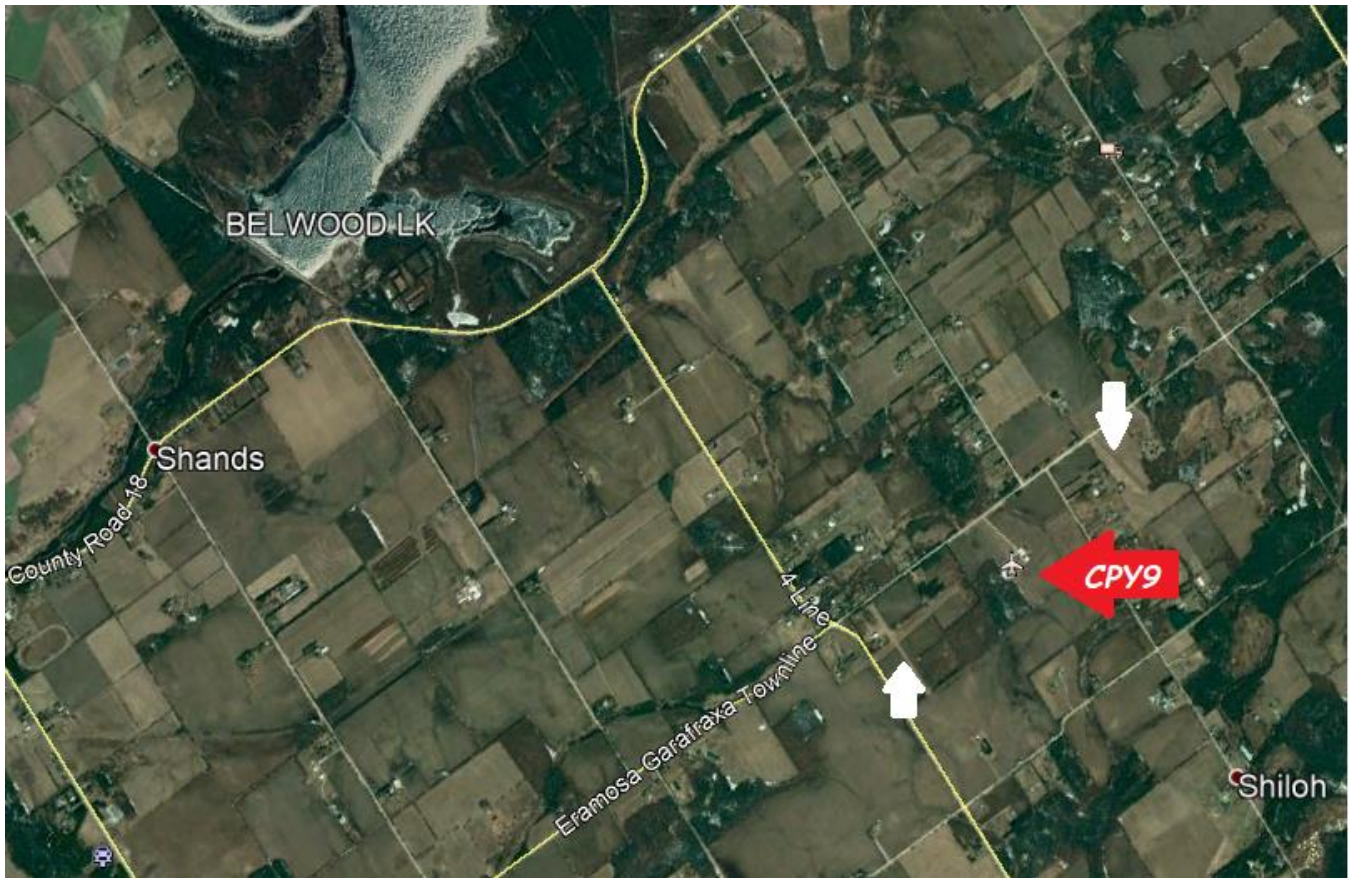




KWRAA – Wilf Holyoake’s 2019 Fly-in

July 27th (10:00 to 14:00 hrs.)



Fly-in Details:

Wilf's Airstrip is located at: N43°43.43' / W80°16.59'

Airstrip Details:

- 1900' x 70' Grass strip
- 1380' ASL
- Oriented North-South (14-32)
- Trees and hydro lines at the north end
- Note neighbouring airstrip 700 metres east and west
- Cessna 172 capable
- Use 123.2 when approaching the field
- 2.8 miles east of the Belwood lake Dam
- Follow standard uncontrolled aerodrome procedures

Drive-in Details:

From Guelph, take Highway 6 North to Nichol Twp. 4th Line. Turn left on Jones Baseline, then turn right onto Eramosa Garafraxa Townline. Drive 6.25 km then turn right into Wilf's driveway.

Contact Information:

Mac McCulloch (Director of Fly-ins and Special Events)
Phone: (519) 831-0967
MacPat@live.ca

Wilf Holyoake (Fly-in Host):
8471 Eramosa Garafraxa Townline
Phone: (519) 843-3095

Note: The chapter will be supplying the burgers, buns, condiments and soft drinks. Event runs from 10am to 2pm.
Please bring a salad or desert to round out the pot-luck lunch at noon. It's always a great lunch and the cost is still \$5, but additional donations are accepted to assist with our good neighbour program.

Bring your spouse or feel free to invite a flying friend... the more pilots (and co-pilots) there the better!